

An aerial photograph of a combine harvester moving through a field. The harvester is positioned in the lower-left quadrant, moving towards the upper-right. The field is divided into a grid of hexagonal cells, each representing a different yield level. The colors range from dark green (high yield) to brown (low yield). The harvester's path is visible as a dark, textured strip on the left side of the image.

**Green Growth**

**Yield Mapping**



## Who we are?

---

**Green Growth** is founded by experts with the vision to support farmers and increase “returns from the field”

- Our team has hands on experience in IoT, product, software development as well as AI from leading tech companies
- We are incorporated in USA and have development office in Spain
- We have diverse set of clients from contractors to big agri holdings in **Europe, USA, LATAM and Asia**
- In 2025 we will expand across Netherlands, Germany, USA Midwest

# What problem are we solving?

---

**Problem** up to 50% harvesters in the World are not equipped with yield sensors, and bulk crops machines are mostly “not smart”

---

## Why yield data is needed (bulk crops)

- estimate harvested volumes in the field
- estimate crop sizes and quality
- conduct measured experiments
- document results of crop rotation
- closing a precision farming cycle

# Our solution supports any OEM and type of machine

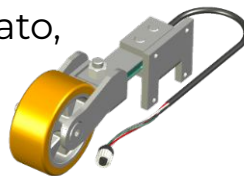
---



**Cereals**  
retrofit and  
modern



**Root crops**  
potato, tomato,  
sugar beet



**Rice**  
small specific  
machines

# Yield Monitoring Main Use Cases



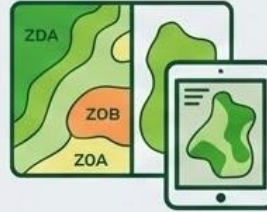
## Real time remote harvest monitoring

tracking harvesting progress, such as dirt on the belt, harvested hectares



## Day planning

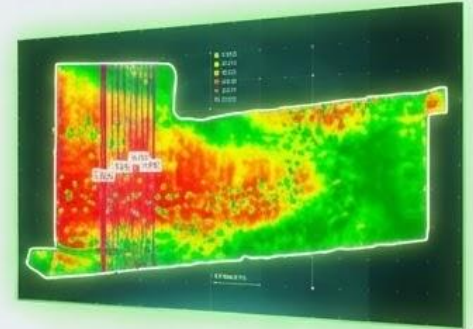
Estimate average yield to plan the harvest by the end of the day



## Field trials & Prescription maps

Selecting productivity areas for AB lines and evaluating results.

Generating productivity areas for prescription maps



© interface of KulturaAG field trials app

# Potato



# Sugar Beet

Modem

Controller

Load cells x2



# Sugar Cane

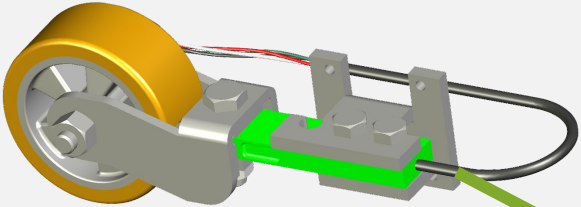
Modem

Controller

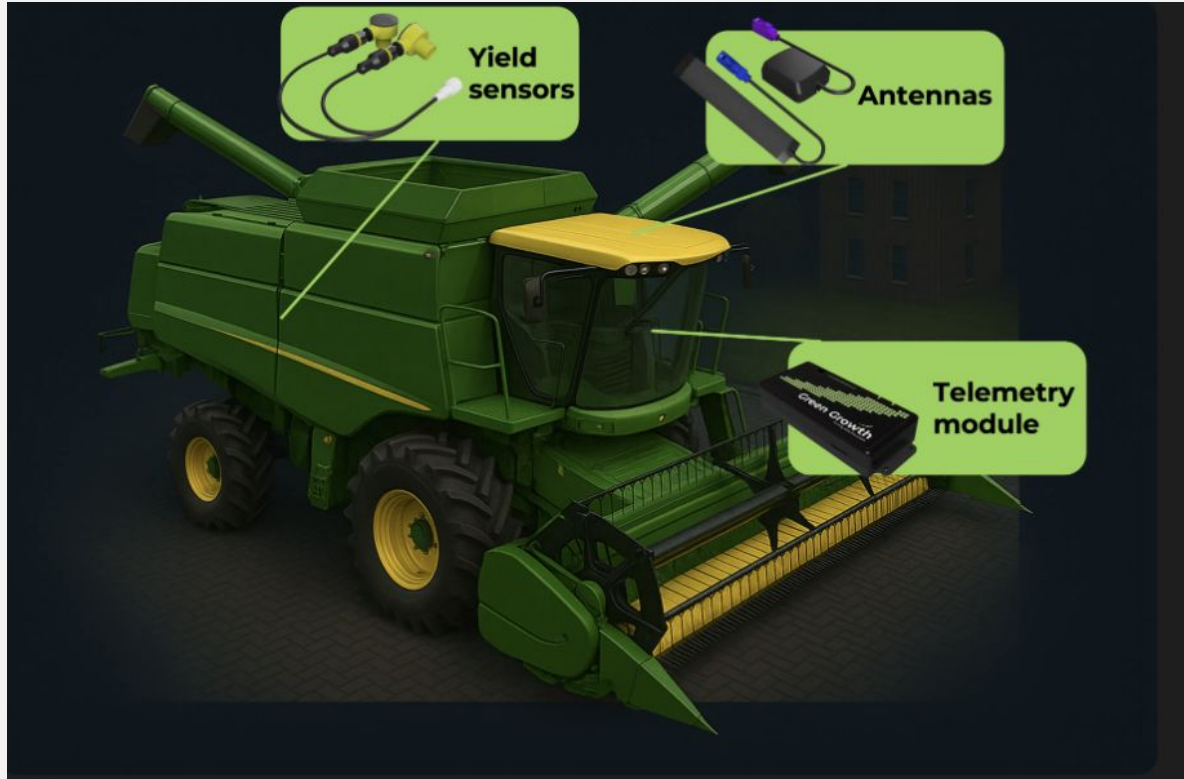
Load cells x2



# Tomato

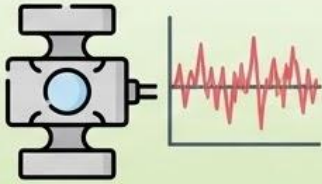


# Corn and Soya



# Technical Challenges

## Noisy data from load cells



zero level weight drifts over time, multiple stops, rotation etc.

## Dirt on the belt



High yield, but essentially lots of dirt

## Real time calibration



No time to calibrate during the harvest

## Multiple machines on the field

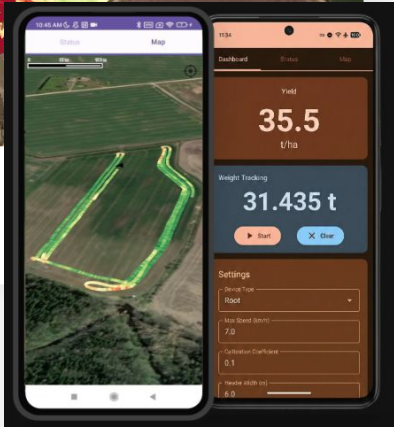


Data aggregation

# The heart of our technology: Simple, Smart, Supportive



Tracks



Yield



Prescription

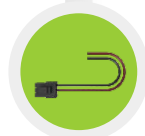


# Our solution offers “IKEA” type installation with min. skills and time requirement

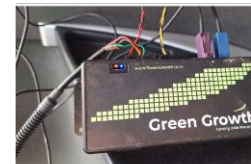
## Bulk Crops Solution - Installation



**Load cells**



**External or in-cabin device installation**



# Existing clients use our solution in multiple potato harvesters OEMs



HOLMER

ROPA

GRIMME

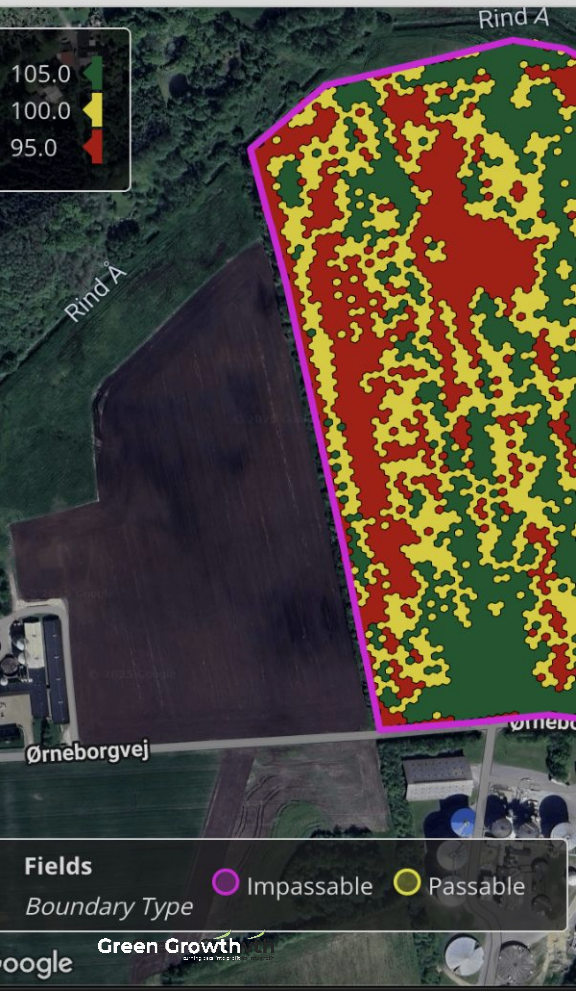
VERVAET

SPUDNIK  
HARVESTING SUCCESS!



## Machines:

Already installed  
on self-propelled  
and separate potato  
harvesters in Europe



## Real time example: Danish potato farm

### Error

is less than 10% without header sensor  
and advanced data cleaning

Field	Fact	Fact clean	GG	Error clean, %
80-0	553.77	523.025	508	2.8
81-0	73.18	68.89	63	8.5
85-0	291.34	264.38	271	2.4
203-0	725.23	628.22	685	8.2

# Pricing Fundamentals

---



## Retrofit kit

Fits any combine harvester without sensors. Ideal for cereals.



## CANBUS / Diagnostic Port Kit

Plug in play into the diagnostic port of CLAAS, John Deere, New Holland & more equipped with yield and moisture sensors.



## Retrofit Kit for Potatoes

Specialized sensors for accurate potato yield monitoring on any potato harvester.



**Green Growth**  
turning data into profit



**Evgeny Savin**  
Founder, CEO

+34 617 463 963  
e.savin@greengrowth.tech