

CROSSROADS
ASIA PACIFIC



KUALA LUMPUR
MALAYSIA
20-22 OCTOBER 2015

Potash developments in Thailand

Abhichati Sayasinchana

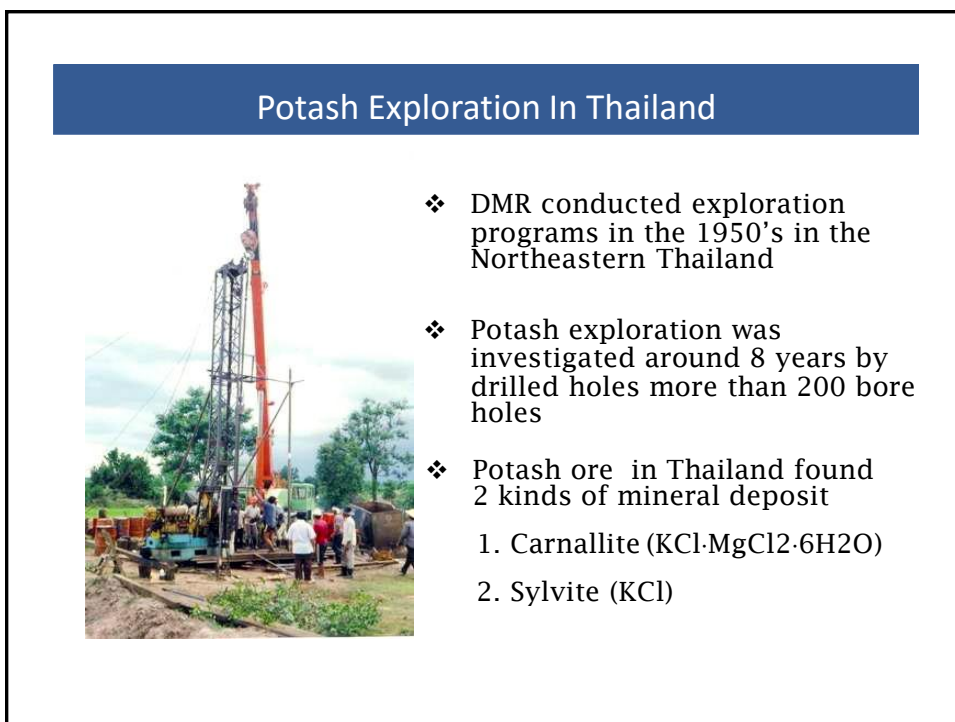
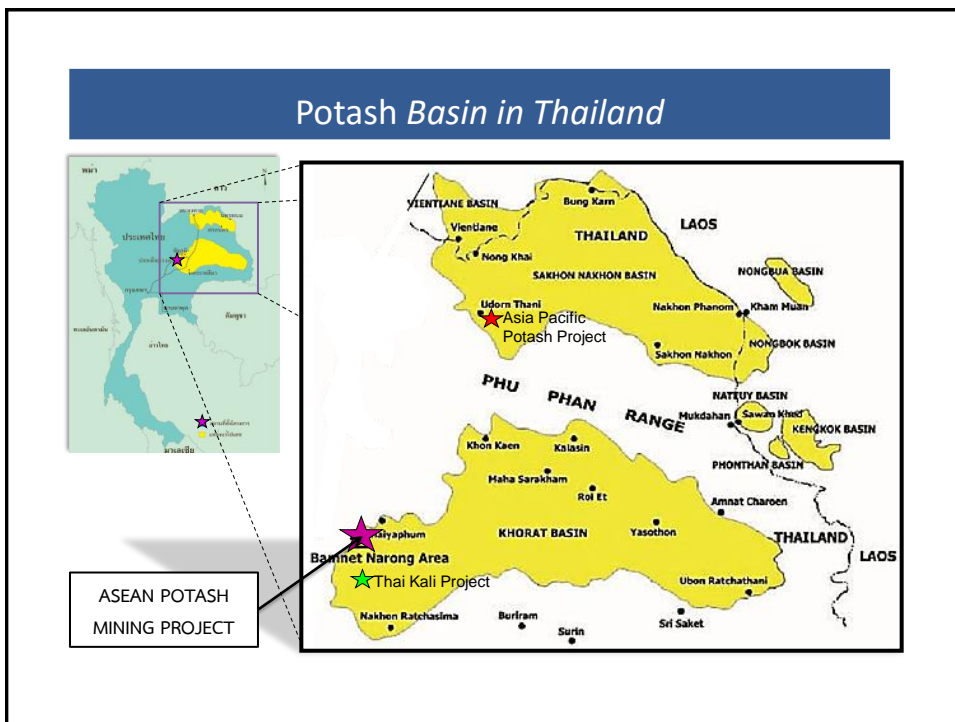
ASEAN Potash Mining Public company Limited, Thailand



Potash developments in Thailand

Table of Content

- Potash Deposit
- Potash Projects Status in Thailand
- ASEAN Potash Mining Company (APMC)
- Product Competitive Advantage



Potential of Potash resources in Thailand

- ❑ Carnallite 400,000 Million Metric Tons
- ❑ Sylvite (KCl) 7,000 Million Metric Tons



Carnallite



Sylvite

Thailand's potash projects status

- Mining Licenses Granted
 - ASEAN Potash Mining Public Company Limited
 - Thai Kali Co., Ltd.
- Applying Mining License
 - Asia Pacific Potash Corporation Co., Ltd.
- Exploration
 - China Mingda Potash Corporation (Thailand) Co., Ltd.
 - Rong Pung Mining Co., Ltd.
 - Saksri Thai Development Co., Ltd.
 - International Petroleum Group Co., Ltd.
 - Sahachart Sestraj Co., Ltd.
 - Pacific Mineral Resources Co., Ltd.

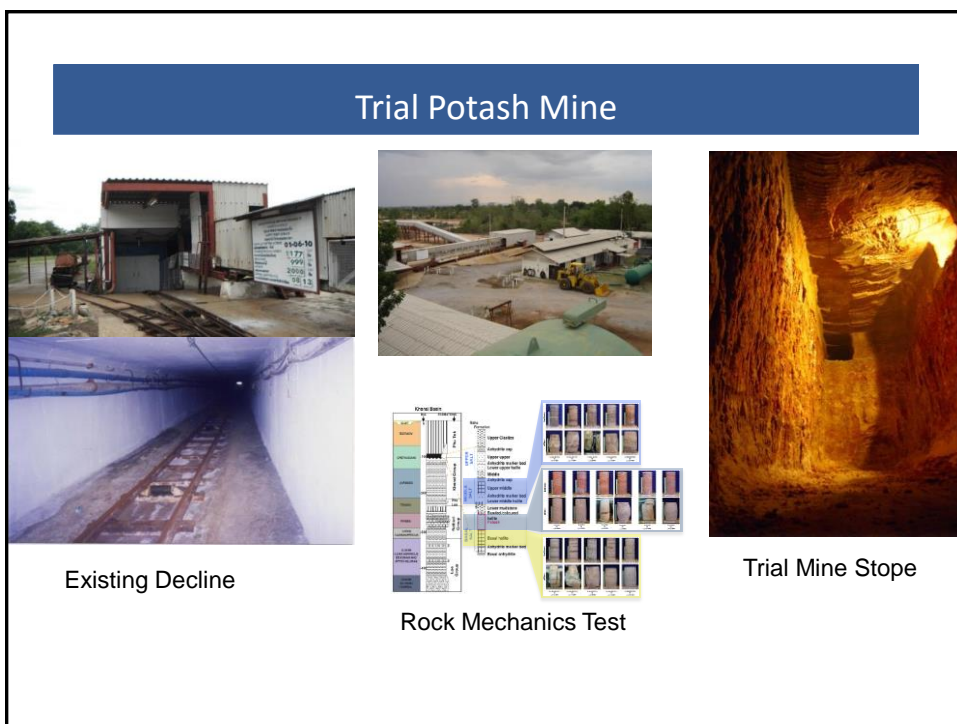
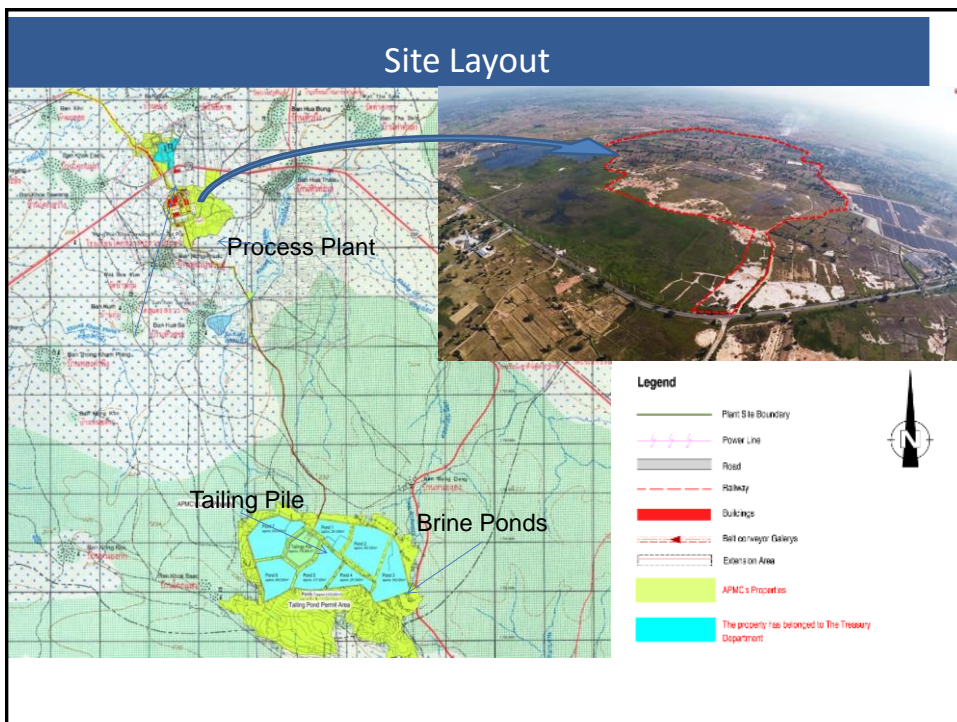
ASEAN Potash mining project

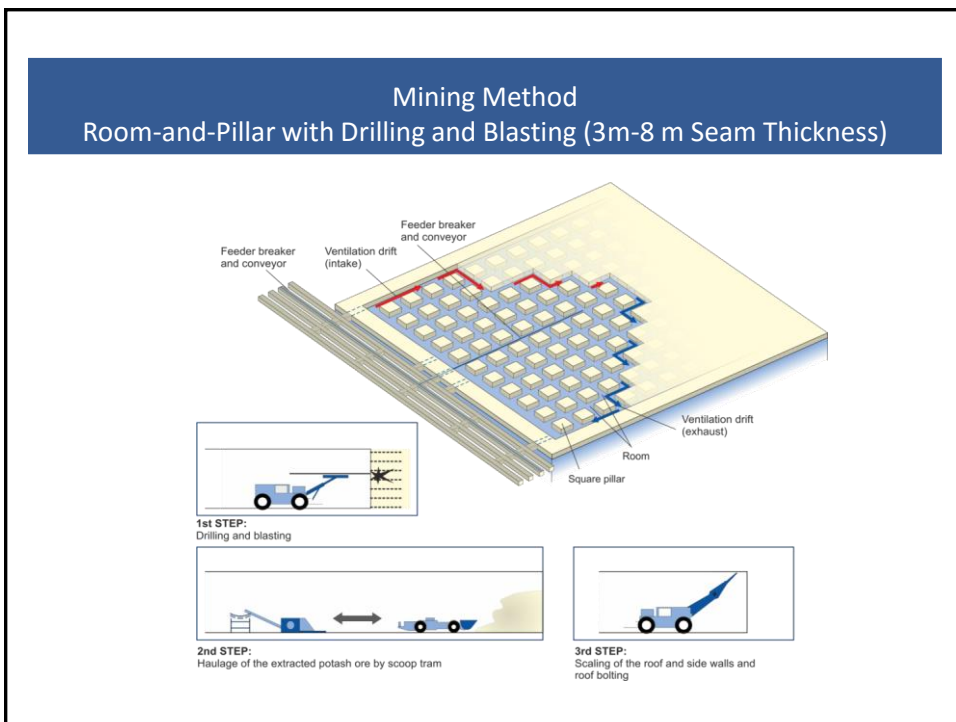
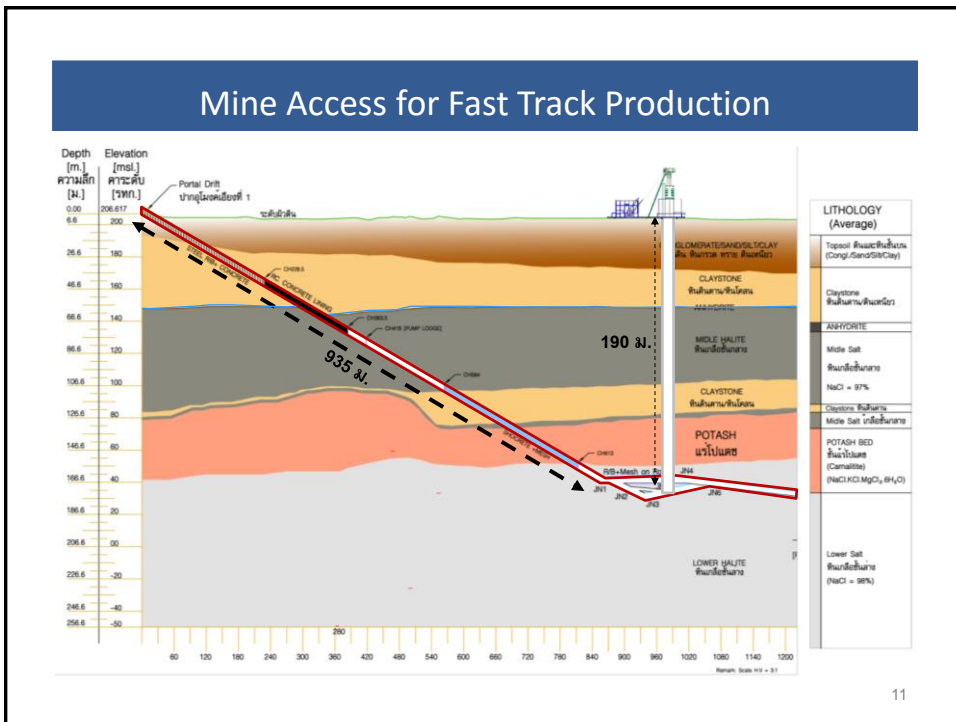
Introduction:

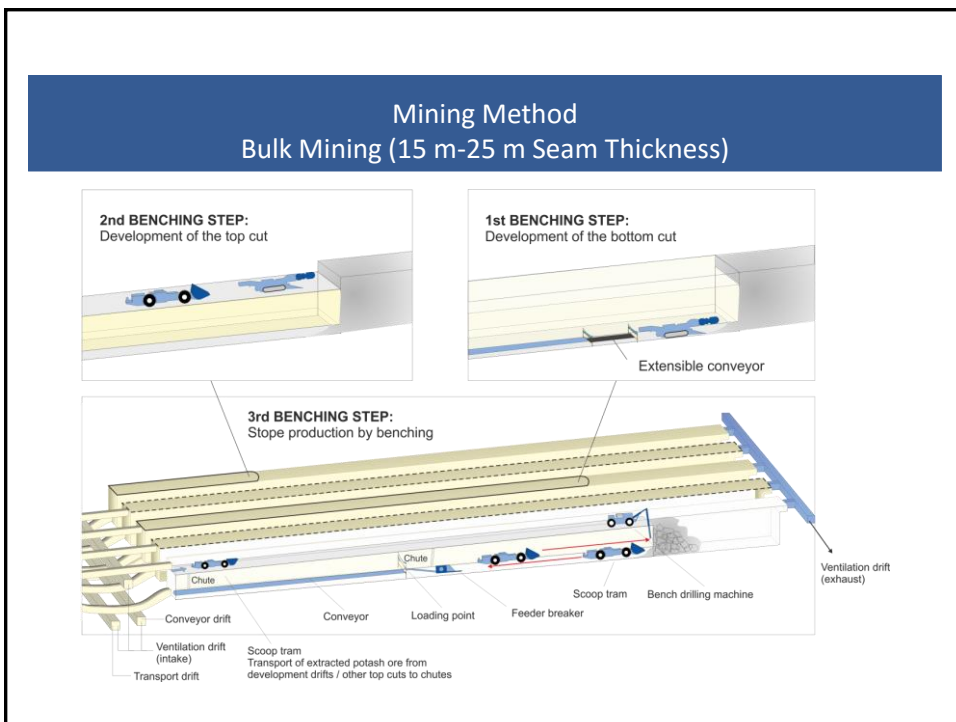
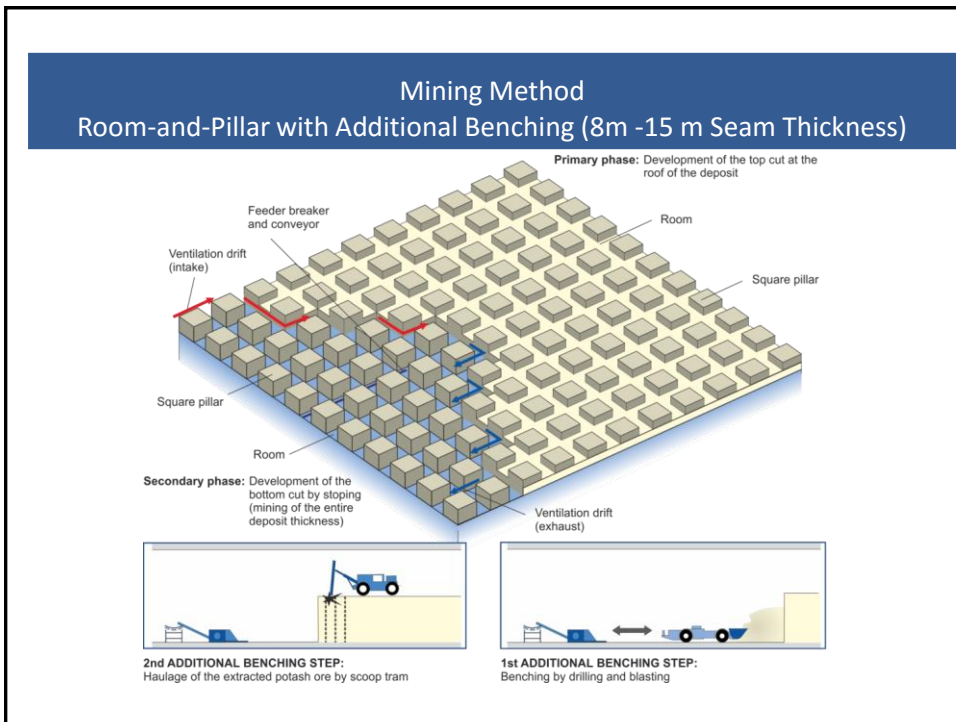
Project Location

- 285 km NE of Bangkok
- 400 km SW to Sea Port









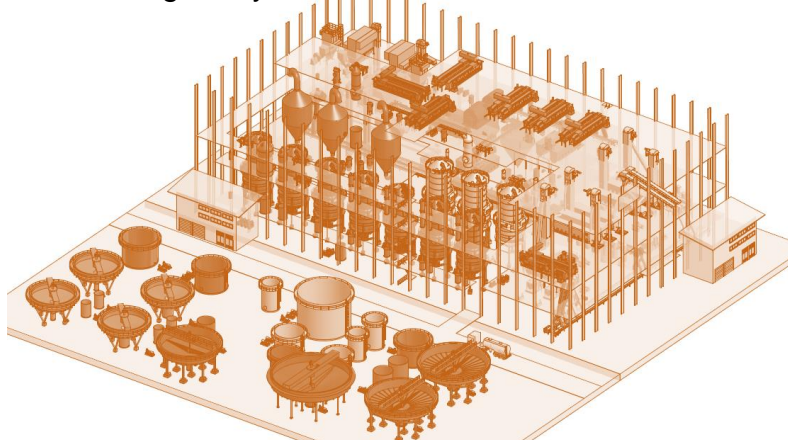
Ore Reserves

The Company has retained Ercosplan, a German Consultant conducting an Extended Comprehensive Feasibility Study, ECFS of the Project. Ercosplans has calculated the ore reserves covering concession area (15 Sq. Km) in compliance with the recognized international standard. The study shows in the below table.

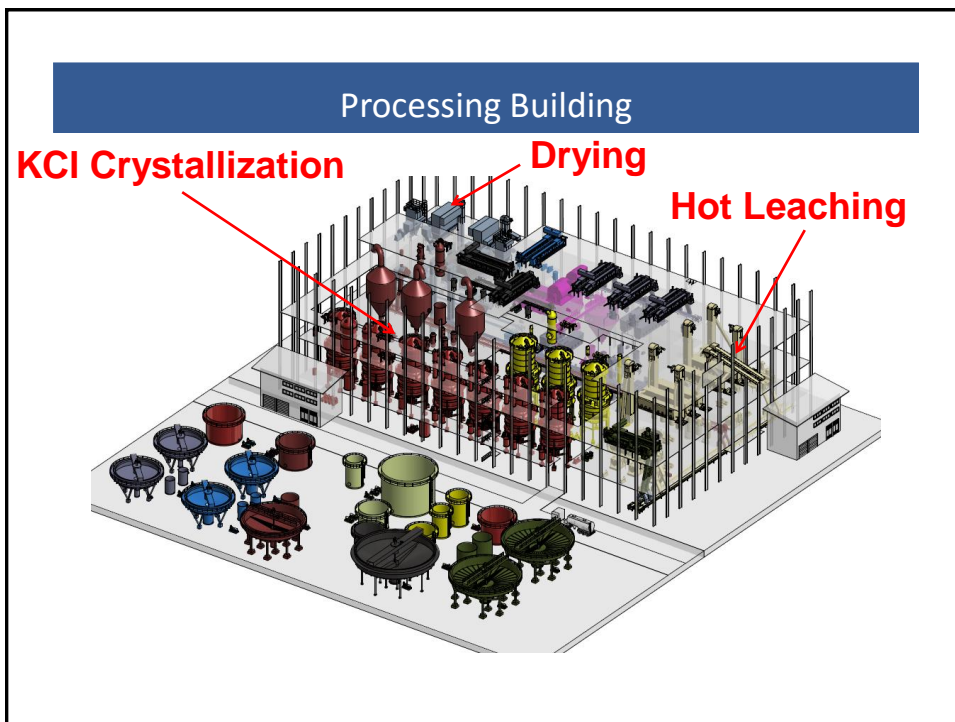
Carnallite Ore Tonnage			
Proven Mineral Reserves	Probable Mineral Reserves	Total Mineral Reserves	KCl Content of Total Mineral Reserves
[10 ⁶ t]	[10 ⁶ t]	[10 ⁶ t]	[%]
135.198	9.208	144.405	14.72

Process Technology

- Hot Leaching & Crystallization



PROVEN AND WELLKNOWN



Project Balance

Carnallite ROM:	average 7,897,500 tpy
KCl Content of Ore:	average 14.7%
NaCl Content of Ore:	average 47.1%
MgCl ₂ Content of Ore:	average 17.7%
MOP Product:	1,100,000 tpy

Transportation–Truck&Barge

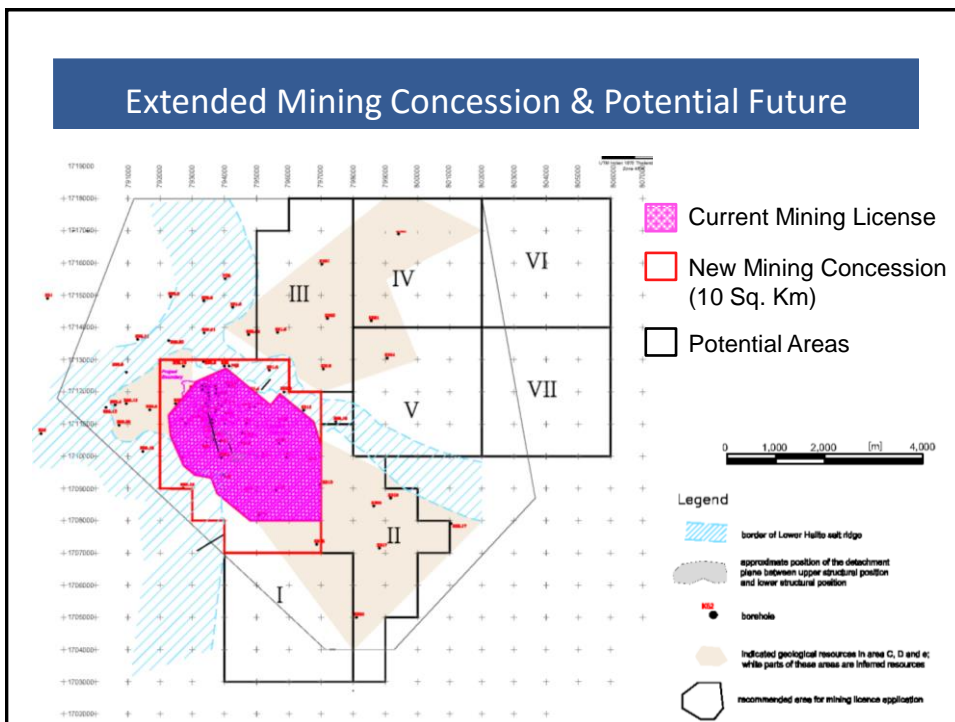


- Transport by trucks 202 km to the river port
- Load to 2,000 t barges
- Transport by barges 190 km to Si-Chang Open Anchorage

Project Schedule

ASEAN POTASH MINING PUBLIC COMPANY LIMITED
Preliminary Project Implementation Schedule

No	Task Description	Duration (month)	Year 2015				Year 2016				Year 2017				Year 2018			
			Q1	Q2	Q3	Q4	Q1	Q2	Q3	Q4	Q1	Q2	Q3	Q4	Q1	Q2	Q3	Q4
1	Securing Financial Package	6m																
2	Selecting EPC Contractor	5m																
3	Decline re-conditioning	6m																
4	Detailed Engineering Design of Shafts	6m																
5	Vertical Shafts Sinking 1&2	24m																
6	Mine Development	30m																
7	Processing Facilities	30m																
8	Infrastructure & Utilities	24m																
9	Tailings Area	21m																
10	Commissioning & Test-run	3m																
11	Start Operation																	



Competative Advantage

ASEAN Potash Mining Public
Company Limited

Competitive Advantage - Overview

- ❖ In the Booming Market - Southeast Asia
- ❖ Proximity to the Export Markets
- ❖ Large thickness of ore deposit at very shallow depth
- ❖ Fast Ramp-up with the existing decline and trial mining area

Asean potash mining plc



Thank you for your attention