

New Fertiliser Projects in Australia

IFA Crossroads Conference
Hanoi, Vietnam 2010

Martin Metz – Incitec Pivot Ltd



General

- The recent increases in fertiliser prices has seen a significant increase in resource identification and project development in Australia (particularly in phosphates).
- Fertiliser projects in Australia are confronted by the fact that target markets are typically export markets.
- In addition for mineral projects (phosphates and potash) the deposits are large distances from ports, infrastructure and communities.
- Many of the projects need to fund or develop the infrastructure required to transport and store end products to port.
- However projects in Australia continue to be developed, with the proximity to South Asia and low risk being major benefits.



Quick Summary

- Legend
- Minemakers
- Krucible
- Perdaman
- Other projects



Phosphates - Georgina Basin

A sedimentary basin of 330,000 km² – formed 850 to 350 Ma

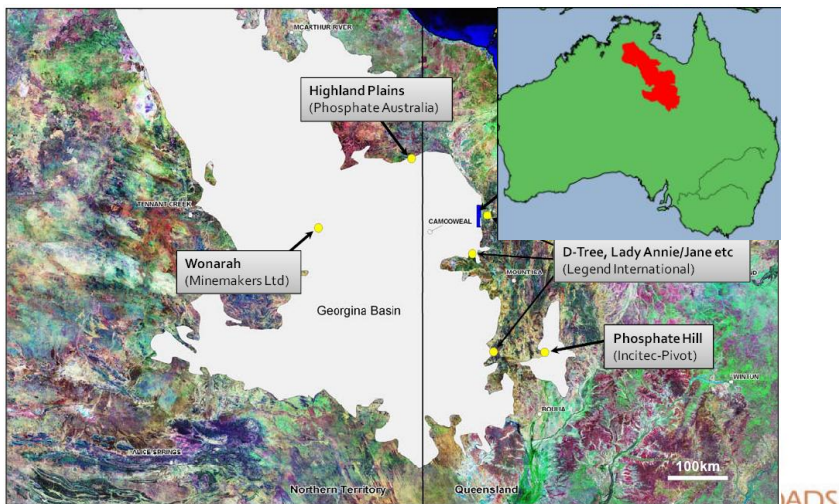


Figure 1 – Location map and Georgina Basin.

ADS
2010

Legend – Paradise Phosphate Project

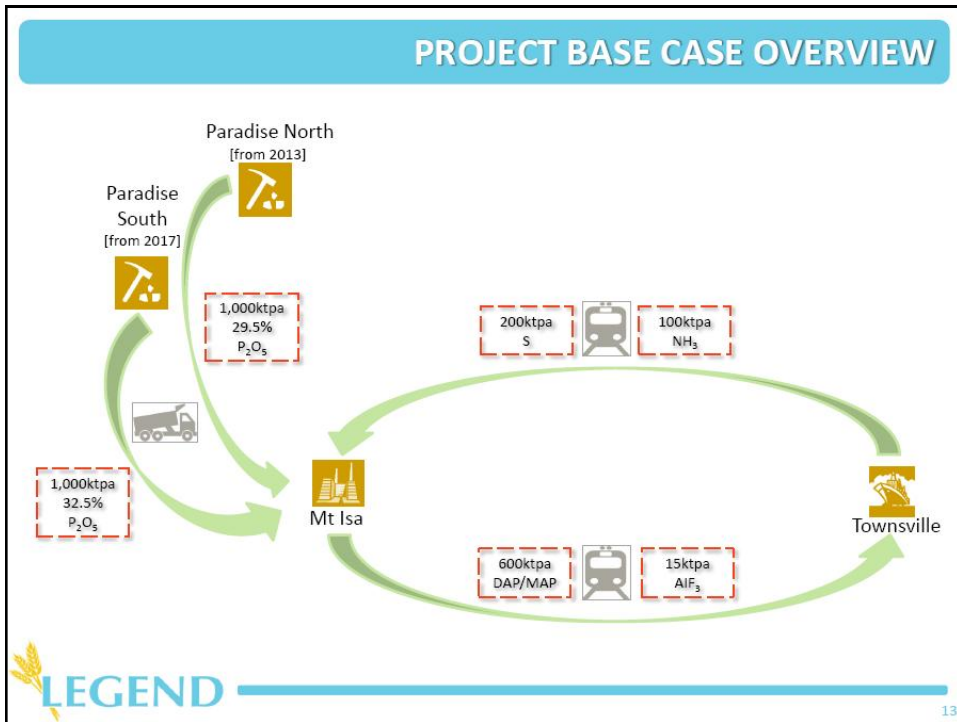
- Initially a project focused on the export of phosphate rock – with IFFCO as partners.
- In 2008 Legend incorporated phosphate reserves from Mount Isa Metals and Uramet.
- Commenced a processed phosphates feasibility study in early 2010.
- Key partners in the development of the feasibility study include; WengFu, Coogee Chemicals and IFFCO.
- Legend has completed a “Base Case” feasibility study for a fully integrated DAP/MAP production facility.
- Legend is progressing a “Definitive Feasibility Study”.



MINERAL RESOURCES

Deposit	Classification	Historic estimates		Current estimates (Australian JORC 2004 indicated & inferred mineral resources)		
		Estimated million tonnes	% P ₂ O ₅	Estimated million tonnes	% P ₂ O ₅	% Historic covered
Paradise South	Non-reserve mineralized material	293	16.6	72	16.9*	Approx. 10%
Paradise North	Non-reserve mineralized material	193	17.6	15	23.9*	Less than 5%
D-Tree	Non-reserve mineralized material	339	16.0	305	15.0**	Approx. 90%
Lily Creek	Non-reserve mineralized material	191	14.9	<i>New estimate pending future drilling results</i>		
Quita Creek	Non-reserve mineralized material	54	17.3	<i>New estimate pending future drilling results</i>		
Sherrin Creek	Non-reserve mineralized material	175	16.5	<i>New estimate pending future drilling results</i>		
Highland Plains	Non-reserve mineralized material	84	13.4	<i>New estimate pending future drilling results</i>		
Total	Non-reserve mineralized material	1,329	16.2	392	15.7	Approx. 25%

* Grade reported at 12% P₂O₅ lower cut-off / ** Grade reported at 10% P₂O₅ lower cut-off



Legend – Paradise Phosphate Project

Results of the “Base Case” feasibility study for “Paradise Project”

- Key numbers:
 - 30+ year mine life
 - 600 kT pa MAP / DAP plus 15 kT AlF_3
 - Capital US\$808 million
 - Cash Operating Cost US\$321 FOB Townsville
 - IRR 20%
- The DFS is due for completion in early Q1,2011.
 - 1,200 kT DAP/MAP and 30 kT pa of AlF_3

Minemakers – Wonarah Phosphate Project

- Project commenced in 2007, focused on export of phosphate rock.
- Exports to be performed through the Port of Darwin.
- In July 2010, Minemakers entered a JV with the Verte Group.
- In September of 2009 Minemakers invested in JDC and secured Australian rights to JDC's kiln based superphosphoric acid process.



Minemakers – Wonarah Phosphate Project

	Indicated	Inferred	Total
WONARAH, NORTHERN TERRITORY			
@15.0% Cut off	197Mt @ 21.6% P ₂ O ₅	207Mt @ 20.0% P ₂ O ₅	404Mt @ 21% P ₂ O ₅
@10.0% Cut off	289Mt @ 18.5% P ₂ O ₅	331Mt @ 17% P ₂ O ₅	620Mt @ 18% P ₂ O ₅
@ 0% Cut off	536Mt @ 12.8% P ₂ O ₅	722Mt @ 11.0% P ₂ O ₅	1,258Mt @ 12% P ₂ O ₅

Estimates. Wonarah is Jorc and N143-101 Compliant.

From the 2010 Fertiliser Briefing report

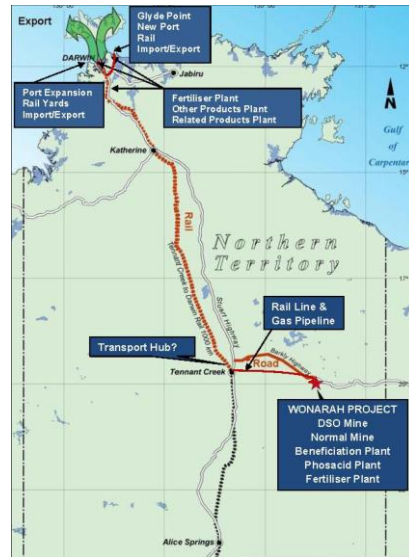


Minemakers – Wonarah Phosphate Project

- As reported in the September 2010 Report:

“The emphasis has now changed from a simple DSO operation only, to an on-site superphosphoric acid (“SPA”) production plant and/or a full development including phosphate fertiliser and chemical production, rail and energy infrastructure, DSO beneficiation etc.”

- Minemakers continue to assess the suitability of Woonarah rock to the JDC process; while also continuing to secure funding.
- Proposed mine is approximately 230 kmls from rail and highway infrastructure. Then approximately 1,000 kmls to the proposed new port and fertiliser facilities in Darwin.



Krucible – Korella Phosphate Project

- Secured tenements immediately south of the Incitec Pivot phosphate operations.
- Commenced work on defining the deposit in 2008.
- Have issued the following results

Lower Cut Off P2O5	Tonnes & Grade	%R2O3	%SiO2	CaO/P2O5
10%	19.3 m mT @ 19% P2O5	4.6%	45.4%	1.32
20%	8.3 m mT @ 27.3% P2O5	3.5%	26.2%	1.39
25%	5.0 m mT @ 30.8% P2O5	3.0%	16.7%	1.37

(from the presentation to the Mining 2010 Resources Convention)



Krucible – Korella Phosphate Project

- Completed a Scoping Study in March 2010 for the development of phosphate rock operation.
- Target markets are Australia and New Zealand markets – rock phosphate importers.
- The breakeven cost of production is estimated to be about \$130/tonne – this includes rail transport from site to port at Townsville
- Will commence a pre-feasibility study in 2011 with commencement of operations targeted for 2011/12.



Perdaman – Collie Urea Project



Perdaman – Collie Urea Project

- US\$2.5 billion development of a coal based Granular Urea production facility.
- Located 200 kms South East of Perth and approximately 70 km's east of Bunbury
- Target production of 2 million mT per annum commencing in 2014.
- In October 2010 Perdaman secured:
 - Agreement with Incitec Pivot Ltd for 100% off take of Urea
 - Approval from the West Australian EPA for the project.



Other Projects

- A large number of projects within Australia continue to be evaluated.
- For Phosphate and Potash, the progress of projects ranges from resource identification to prefeasibility.
- After the fertiliser price fall of 2008, projects were slowed.
- In addition the strength of the AUD versus the USD has significantly impacted the out look for these projects.
- Basis a recovery in the USD and continued strong demand in South Asia these projects will continue to be developed.



Other Projects

Urea	Phosphate	Potash
Latrobe Valley Fertilisers	Phosphate Australia Ltd Korab Resources Ltd Arafura Resources Ltd Aurox Resources Northern Uranium	Reward Minerals Ltd Rum Jungle Uranium Ltd Jervois Mining Ltd

