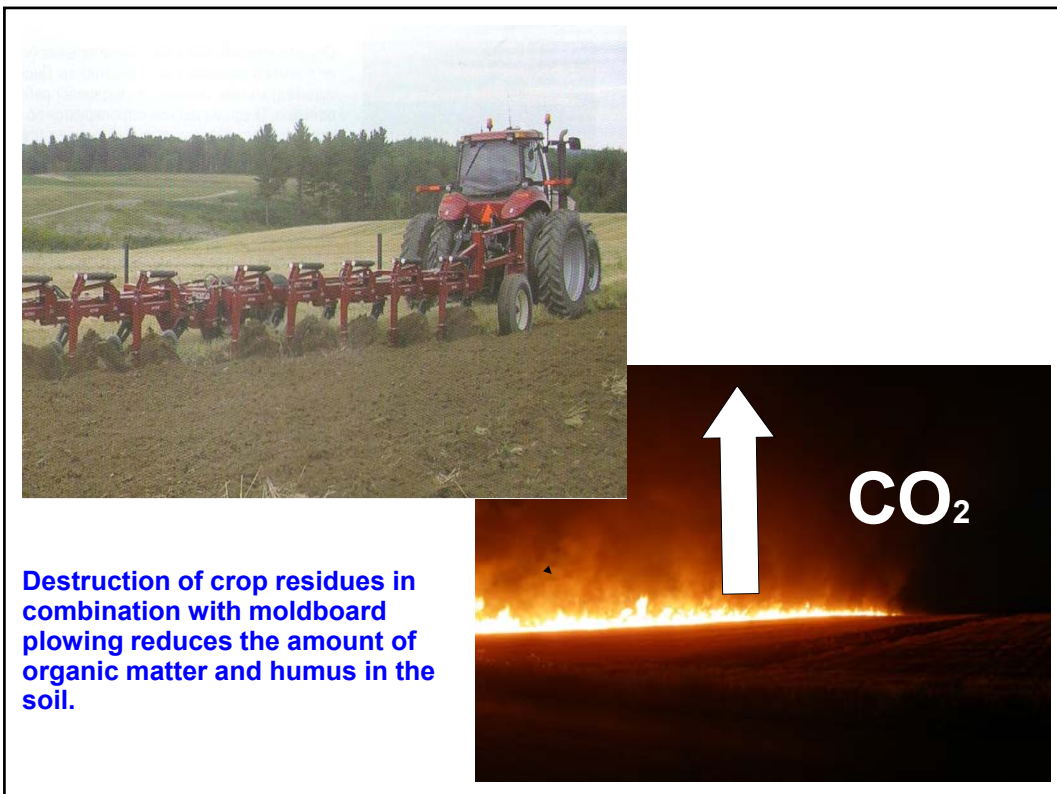




PRACTICAL EXPERIENCE OF EFFECTIVE USE OF CROP-SPECIFIC FERTILIZERS IN RUSSIAN CONDITIONS AND ACCOMPANYING PROBLEMS

Alexander MALTSEV
Agrofirm "Topaz", Russia

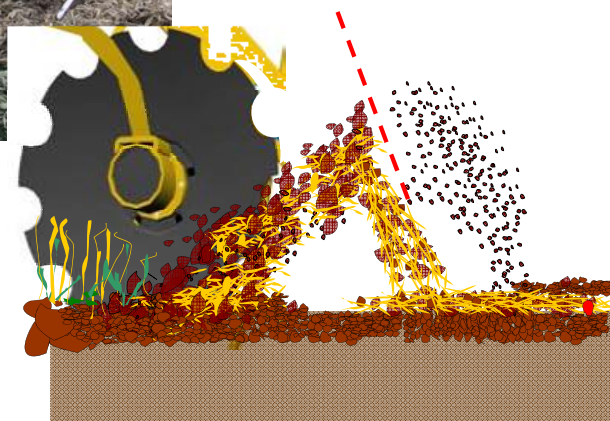




Intensive mechanical processing of earth caused deterioration of the soil structure.



The use of chisel soil tilling methods combined with mulching the surface horizon enables to decrease erosion and to increase fertility of the soil.





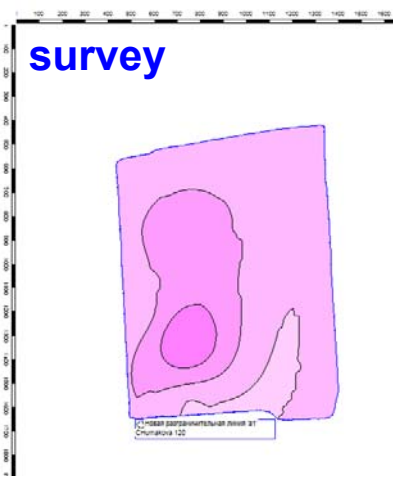
The large number of plant residues in the surface layer of soil to a large extent changed the strategy and methods of delivery of mineral nutrition to cultivated plants.



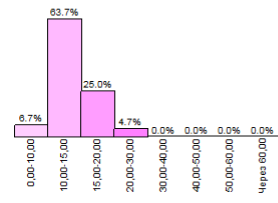
Acceleration of the decomposition of plant residues has come to play a significant role in the strategy of mineral nutrition



Agrochemical survey



Карта замеров '2008 P205 machigin 2'
 Пользователь: ООО АФ ТОРАЗ
 Загонка: СЧиталкова 120
 GPS-Дата: 29.10.2007 2:48:06
 Значения взятые из заказа:
 Площадь: 0,0000 га
 Общее количество -
 Среднее значение влажности зерна: 0,00 %
 Значения взятые из карты:
 Кромка поля: 104,9150 га
 Среднее значение (P205 machigin): 14,02
 Общее количество (P205 machigin) -
 Среднее значение из кромки поля:
 0,000 т / 104,9150 га = 0,00 т/га
 Гистограмма для P205 machigin:



Разграничительная линия 'Новая разграничительная линия'
 Пользователь: ООО АФ ТОРАЗ
 Загонка: СЧиталкова 120
 Дата: 29.10.2007 2:20:56
 Площадь: 104,9150 га
 Наружная линия 'a1': 4 126,42 м



Installation of the chisel tool to introduce liquid complex fertilizers (LCF)





Introduction of complex granular fertilizers at the time of sowing.



Root feeding of cultivated crops with liquid nitrogen fertilizer (UAN 32) with the use of disc coulters.

**Introduction of microfertilizers and growth promoters together with herbicides
(CRN 5,6 cultivator with spray equipment)**



**Supplementary feeding of winter wheat with liquid fertilizers on the basis of foliar diagnosis
(the use of GPS navigation)**



